



PRODUCTS N°7

Double-layer mixing Tank

Purpose:

- 1.It is applicable to medicine, food, fruit juice beverage, dairy products, wine brewing, bioengineering, daily chemicals, fine chemicals, electronics and other fields.
- 2.It can be used as material mixing tank, preparation tank, fermentor, liquid storage tank, transfer tank, mixing bowl, temporary storage tank, disinfection tank and aging tank.

Structural features:

- 1 Double-layer stainless steel structure is adopted, and thermal insulation material is filled in the middle, design can be subject to users' demand, and multifunctional supporting facilities can be provided.
- 2 Hygiene level stainless steel is adopted as the material, and 304 (S30408), 304L (S30403), 316 (S31608), 316L (S31603) can be selected according to media or customer's requirement.
- 3 It conforms to GMP requirement; the internal wall of barrel has circular arc transition with end enclosure and connecting pipe, ensuring hygiene and no dead angle.
4. The structure design is user-friendly with great operability
- 5.The bottom adopts the following four types according to process, including convex, cone, butterfly and inclined type.
- 6.The surface roughness of product is usually at Ra 0.8~0.2 μ m.

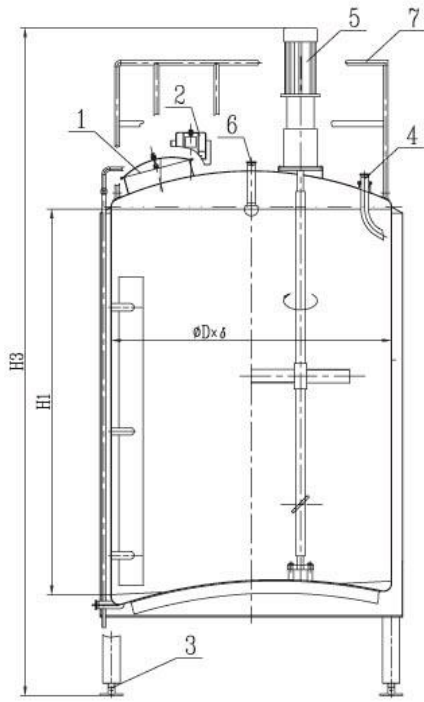
Tank configuration:

1. Quick open manhole
2. Ventilation cap (prevent entry of mosquito and foreign matter)
3. Adjustable leg
4. Removable feed tube
5. Mixing system
6. Cleaning ball (model and specification are subject to requirements)
7. Crawling ladder and guardrail (optional)
8. Thermometer (optional)
9. Liquidometer (optional)

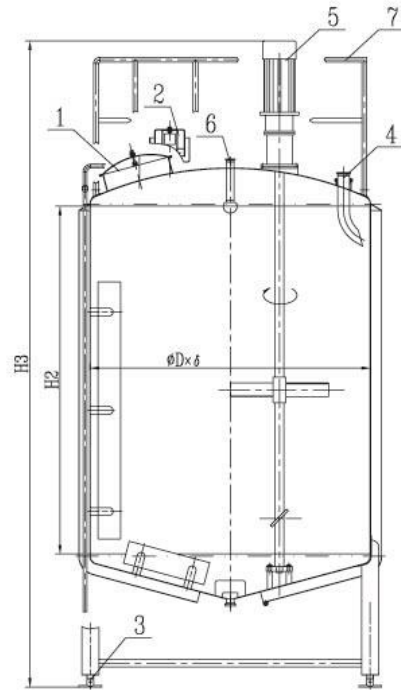
Technical data sheet for double-layer mixing tank

| Effective volume (L) | Size (mm) | | | | Power (KW) | Speed (r/min) |
|-------------------------|------------------------|------|------|------|---------------|------------------|
| | $\phi D \times \delta$ | H1 | H2 | H3 | | |
| 500 | 850×2.5 | 900 | 850 | 2800 | 0.55 | 60 |
| 1000 | 1150×3 | 1165 | 1080 | 3500 | 0.75 | 60 |
| 2000 | 1450×3 | 1400 | 1300 | 3800 | 0.75 | 60 |
| 5000 | 1750×3 | 2030 | 2150 | 4200 | 1.5 | 60 |
| 6000 | 1850×3 | 2250 | 2120 | 4500 | 1.5 | 60 |
| 8000 | 1950×4 | 2680 | 2500 | 4800 | 1.5 | 60 |
| 10000 | 2150×4 | 2800 | 2660 | 5000 | 2.2 | 60 |
| 12000 | 2250×4 | 2950 | 3100 | 5500 | 2.2 | 60 |
| 16000 | 2650×4 | 3460 | 3300 | 6000 | 3 | 60 |
| 20000 | 2850×4 | 3630 | 3300 | 6200 | 3 | 60 |

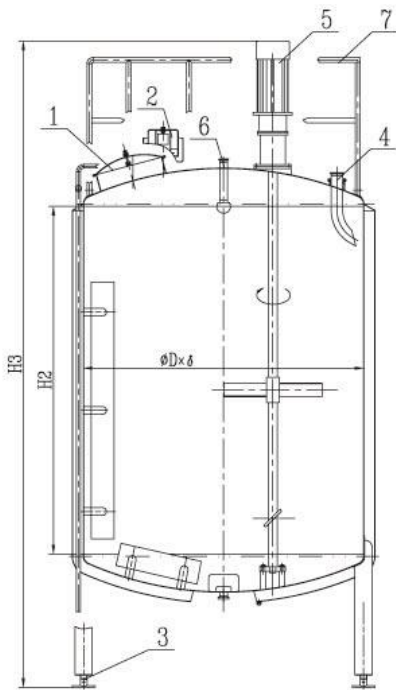
Double-layer Mixing Tank(pot)



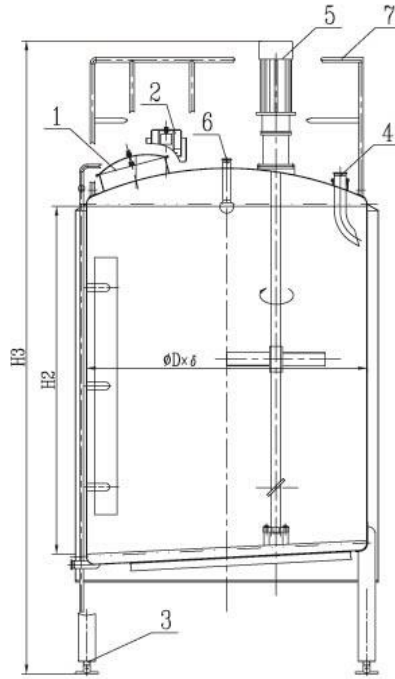
Upper dish shape and lower convex shape



Upper dish shape and lower taper shape



Upper dish shape and lower dish shape



Upper dish shape and lower inclined bottom

Tank Configuration:

- | | |
|--|---|
| 1. Quick open manhol | 2. Ventilation cap(prevent of mosquito and foreign matter) |
| 3. Adjustable leg | 4. Removable feed tube |
| 5. Mixing system | 6. Cleaning ball(model and specification are subject to requirements) |
| 7. Crawling ladder and guardrail(optional) | |
| 8. Thermometer(optional) | 9. Liquidometer(optional) |