

# PRODUCTS N°8

## Three-layer mixing Tank

### Purpose:

1. It is applicable to medicine, food, fruit juice beverage, dairy products, wine brewing, bioengineering, daily chemicals, fine chemicals, electronics and other fields.
2. It can be used as material mixing tank, preparation tank, fermentor, liquid storage tank, transfer tank, mixing bowl, temporary storage tank, disinfection tank and aging tank.

### Structural features:

1. Three-layer stainless steel structure is adopted, thermal insulation material is filled in the middle of the three layers, and hot water or cold water can be used in the middle sleeve to realize function of heating or cooling, design can be subject to users' demand, and multifunctional supporting facilities can be provided.
2. Hygiene level stainless steel is adopted as the material, and 304 (S30408), 304L (S30403), 316 (S31608), 316L (S31603) can be selected according to media or customer's requirement.
3. It conforms to GMP requirement; the internal wall of barrel has circular arc transition with end enclosure and connecting pipe, ensuring hygiene and no dead angle.
4. The structure design is user-friendly with great operability
5. The bottom adopts the following four types according to process, including convex, cone, butterfly and inclined type.
6. The surface roughness of product is usually at Ra 0.8~0.2 $\mu$ m.

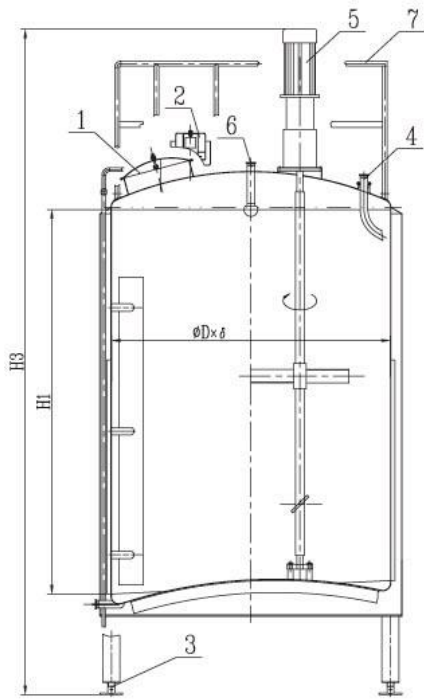
## Tank configuration:

1. Quick open manhole
- 2 .Ventilation cap (prevent entry of mosquito and foreign matter) 3
- .Adjustable leg
4. Removable feed tube
- 5.Mixing system
6. Cleaning ball (model and specification are subject to requirements)
7. Crawling ladder and guardrail (optional)
8. Thermometer (optional) 9. Liquidometer (optional)

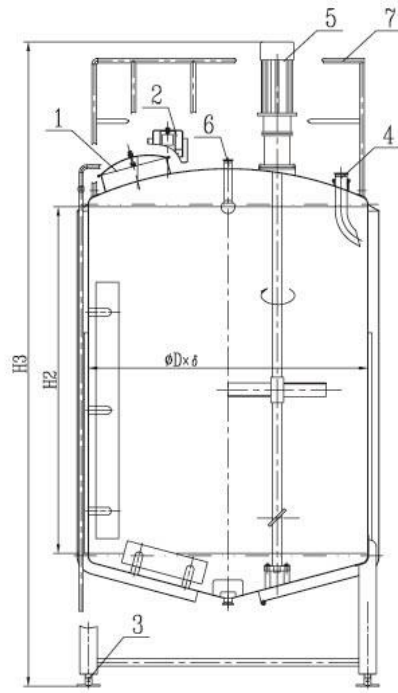
## Technical data sheet for three-layer mixing tank

Effective volume (L)	Size (mm)				Power (KW)	Speed (r/mm)
	$\phi D \times \delta$	H1	H2	H3		
500	850×2.5	900	850	2800	0.55	60
1000	1150×3	1165	1080	3500	0.75	60
2000	1450×3	1400	1300	3800	0.75	60
5000	1750×3	2030	2150	4200	1.5	60
6000	1850×3	2250	2120	4500	1.5	60
8000	1950×4	2680	2500	4800	1.5	60
10000	2150×4	2800	2660	5000	2.2	60
12000	2250×4	2950	3100	5500	2.2	60
16000	2650×4	3460	3300	6000	3	60
20000	2850×4	3630	3300	6200	3	60

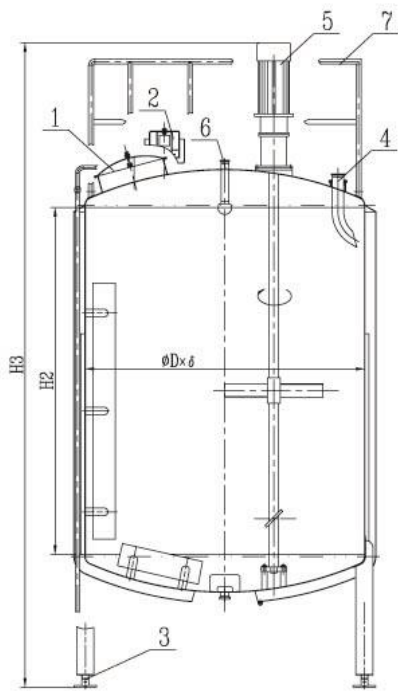
### Three-layer Mixing Tank(pot)



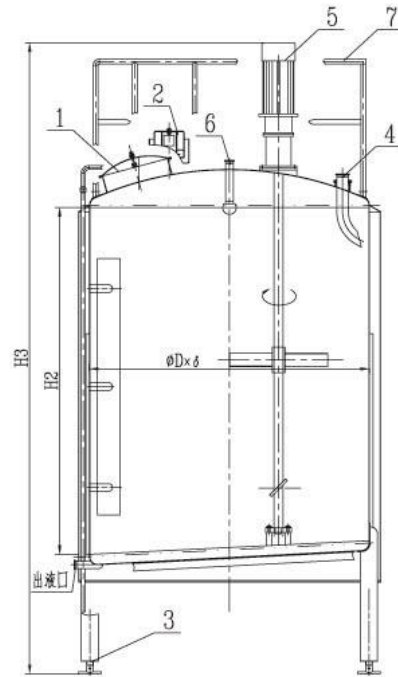
Upper dish shape and lower convex shape



Upper dish shape and lower taper shape



Upper dish shape and lower dish shape



Upper dish shape and lower inclined bottom

#### Tank Configuration:

- |  |   |
|--|---|
| 1. Quick open manhol                       | 2. Ventilation cap(prevent of mosquito and foreign matter)            |
| 3. Adjustable leg                          | 4. Removable feed tube  |
| 5. Mixing system                           | 6. Cleaning ball(model and specification are subject to requirements) |
| 7. Crawling ladder and guardrail(optional) |   |
| 8. Thermometer(optional)                   | 9. Liquidometer(optional)   |